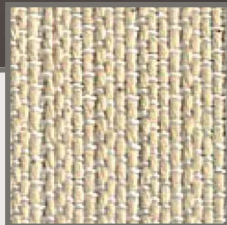
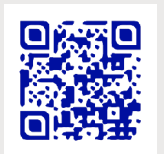


Woven belts for biscuits



- Ideal absorption
- Homogeneity of the production (endless belts)
- Less shutdown of machine

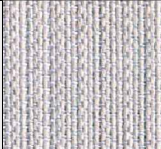

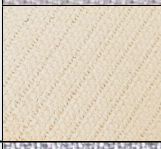



MANUFACTURE
DOLLFUS & MULLER
SINCE 1811

Woven belts for biscuits

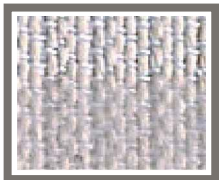
Our qualities of fabrics are specially adapted as plain weave of rotary moulder, rotary cutter, oven entries. They enable the ideal absorption of moisture and fat from the dough.

Woven belts for biscuits

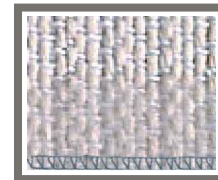
Machine types	Recommended products		Characteristics						
	Insight	Reference	Composition	Weaving	Thickness (mm)	Weight (g/m ²)	Maximum working T°	Maximum Width available (cm)	Length (m)
Rotary cutters		P 120 FC	65% Coton 35% Polyester	Double weave	2	1200	About 100° C	400	from 1 to 11
		P 120 NT	86% Coton 14% Polyester	Double weave	2,2	1350	About 100° C	400	from 1 to 11
		PV 120 N Panama	60% Coton 40% Polyester	Double weave	2,2	1200	About 100° C	400	from 1 to 11
Rotary moulders Rotary cutters Oven entries		P 130	60% Coton 40% Aramid	Double weave	2,8	1600	About 160° C	400	from 1 to 11

All our fabrics are approved food contact

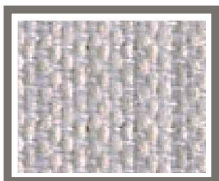
Finitions possibles pour les toiles



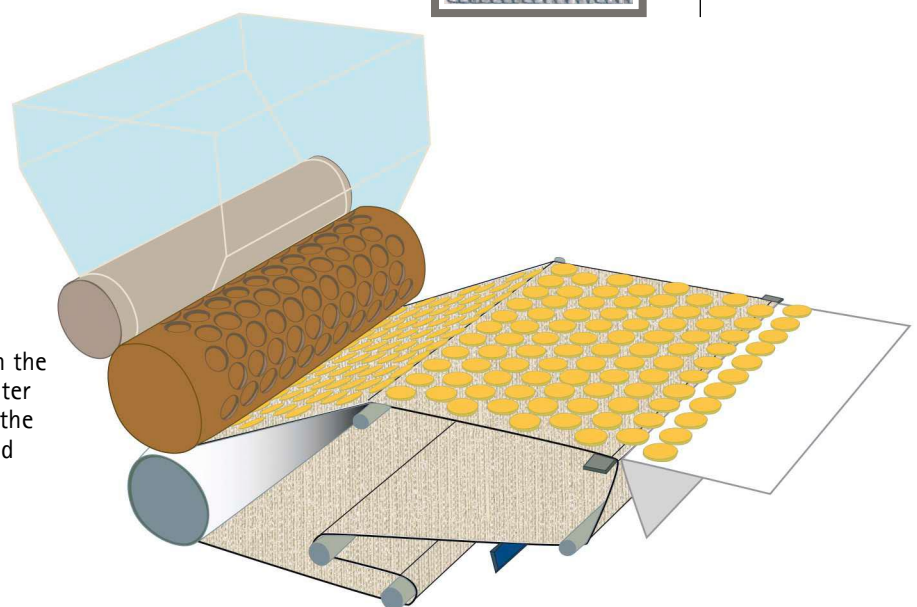
Coated edges with standard polyurethane



Coated and oversewn with polyurethane for a greater resistance



Polyurethane coating on the bottom side for a greater stability, resistance of the breaking strength and lifespan



The content of this catalogue is subject to change at any moment. Printed by Ormont Imprimeur.